

## SHORT CURRICULUM VITAE

### Alexander Artero Floyd

Floyd, A.A.  
Undergraduate student

Universidade Federal de Santa Catarina (UFSC)  
Florianópolis – SC, Brazil  
Contact: kikofloyd@yahoo.co.uk

Homepage: <http://www.lbmm.ufsc.br>

#### 1. EDUCATION

2013 - present Bachelor student in Biological Sciences at Universidade Federal de Santa Catarina, Brazil.

#### 2. PROFILE

So far in my undergrad I have assisted in various activities such as: stomach content analyses of *Chromis limbata*; many scuba dives analysing diversity; feeding pressure and trophic connections between the reef community (Fig. 1); ethnobiological assesment of spearfishermen pray in Santa Catarina; ichthyofaunal assessment in small streams in Itapema city.

I have been scuba diving in Santa Catarina state since 2007, mostly in the marine reserve of Arvoredo as a diving instructor disseminating the necessity biological cautions in these enviornments while observing behavior, interactions and trophic connections between the reef commnity. In the future I intend to continue researching reef communities and disseminating the knowledge obtained.

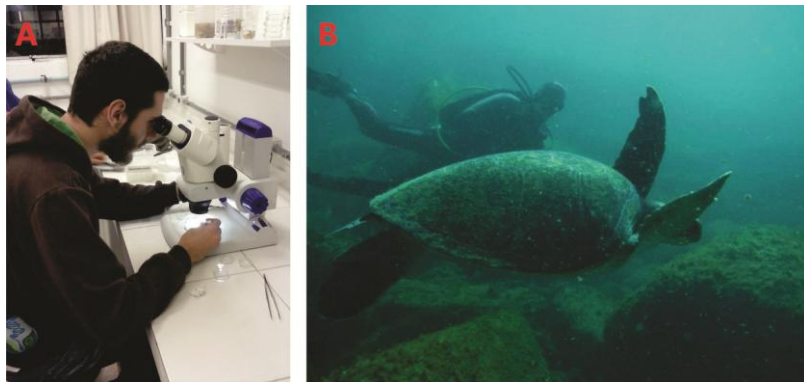


Fig. 1 - A: Reef fish stomach content analyses; B: Scuba diving in marine reserve of Arvoredo.

#### 3. MAIN AIMS

My main goal is to better understand behavior, conservation, ethnobiology and macroecology of marine fish. I also want to produce materials that would be used for dissmination of knowledge and skills about the marine environment focused for scuba divers and researchers.

#### 4. OTHER RELEVANT INFORMATION

##### Languages:

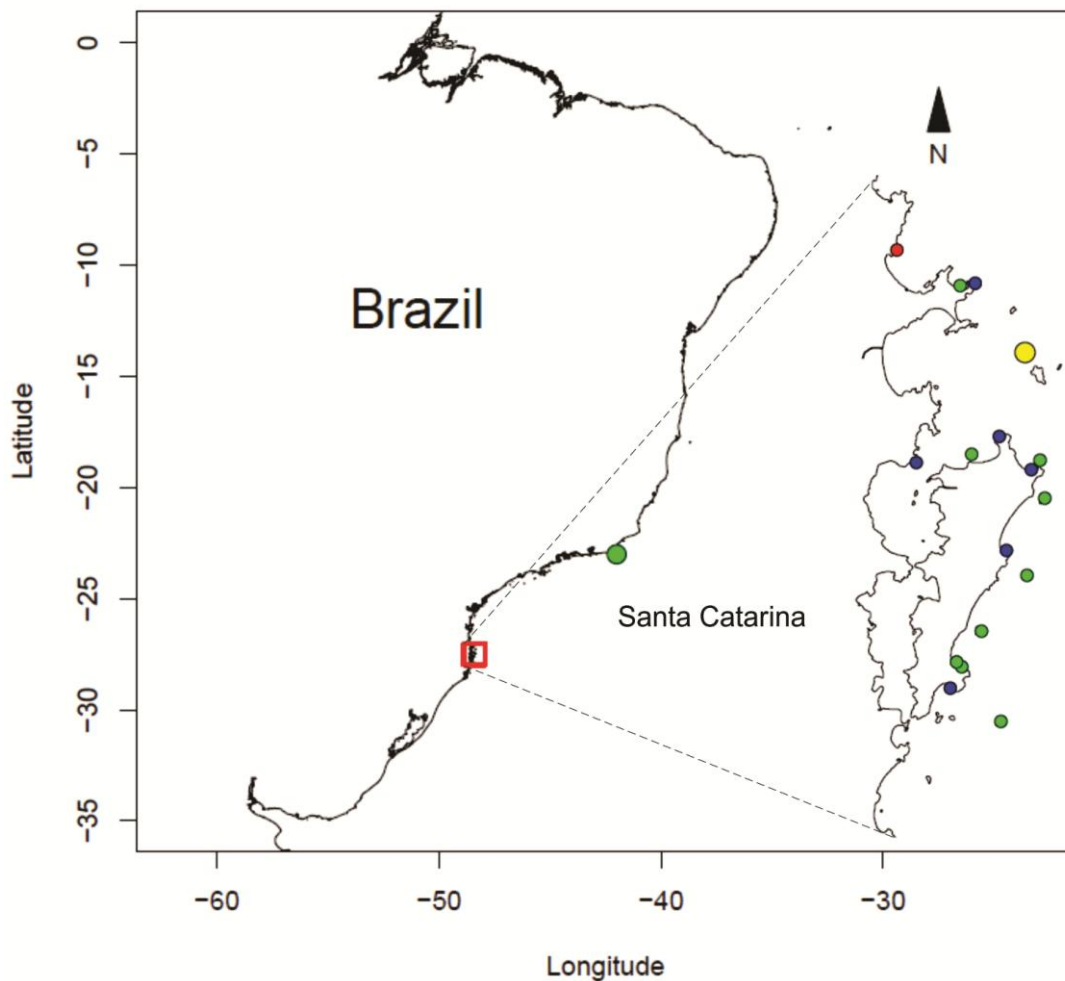
- English (native language);
- Portuguese (second language);
- Spanish (basic reading and speaking).

**Diving qualifications:** PADI IDC Staff Instructor #307414; HSA Instructor I-3476.

**Seafarer formation:** MAC – Marinheiro Auxiliar de Convés #441P2012000770 (Level 1).

**Scientific experience:** Experience working in marine systems (near-shore reefs and open-sea) and freshwater environments (small streams) with limited structure.

## 5. FIELDWORK EXPERIENCE



- = Scuba Diving;
- = Snorkeling;
- = Rebio Arvoredo, no-enter zone (Scuba Diving);
- = Freshwater Assessment.

**Fig. 2-** Fieldwork experience along the Brazilian coast. Red square represents Santa Catarina state coast (Florianópolis region), where I have been scuba diving (green circle) and snorkeling (blue circle), including the marine non-enter zone of Rebio Arvoredo (yellow circle) and freshwater assessment in Itapema (Red star). The bigger green circle represents Arraial do Cabo (Rio de Janeiro).