

SHORT CURRICULUM VITAE

Lucas Nunes Teixeira

Nunes, L.T.
MSc. Ecology candidate

Universidade Federal de Santa Catarina (UFSC)
Florianópolis – SC, Brazil
Contact: nunes.fln@bol.com.br

Homepage: <http://www.lbmm.ufsc.br>

1. EDUCATION

- 2014 - present Master's degree in Ecology, Universidade Federal de Santa Catarina, Brazil. (CAPES, Brazilian Government Scholarship, US\$13,000)
- 2009 - 2013 Bachelor degree in Aquaculture Engineer, Universidade Federal de Santa Catarina, Brazil.

2. PROFILE

During my undergraduation I have worked on many different projects (Fig. 1): stomach content analyses of butterflyfishes and stream fishes; restauration of the Ichthyological Collection of Universidade Federal de Santa Catarina (UFSC); ichthyofauna assessments in lagoons, rivers and small streams along Santa Catarina state; analyses of fauna assemblages associated with *Phragmatopoma* sp. reefs; and analyses of fish feeding pressure on rock and coral reefs along the Brazilian coast and oceanic islands from the Atlantic sea. I have done my undergraduate monograph under supervision of Dr. Sergio Floeter in the Marine Macroecology and Biogeography Lab at the Universidade Federal de Santa Catarina, Florianópolis, Brazil. My master research project focus on comparing feeding and agonistic interactions of freshwater fishes in lacustrine, rocky and plant-dominated habitats (Fig. 2). Still, I have been developing projects related to feeding behavior and diet, cleaning interactions and ichthyofauna assessments. My plans to a PhD include to improve the understanding of the diet and trophic interactions among reef fishes.



Fig. 1 - A: Scuba diving in Arraial do Cabo for observing rock reef; **B:** Ichthyofauna assessment in a small lagoon, Bombinhas city; **C:** Analyses of stomach contents from reef fishes.

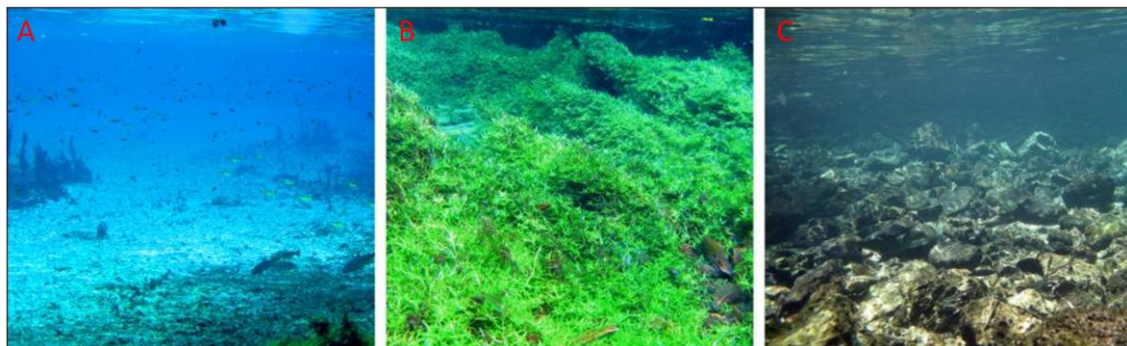


Fig. 2 - Three different freshwater habitats at Olho d'água stream. **A:** lacustrine, **B:** plant-dominated, and **C:** rocky habitats.

3. MAIN AIMS

My main goal is to improve the understanding of trophic and interspecific interactions and distribution patterns of reef and freshwater fishes. My secondary aim is to produce high quality knowledge on ecology of fish species to scientists and non-scientific community in order to avoid generalizations.

4. PUBLICATIONS

Published

Longo GO, Morais RA, Martins CDL, Mendes TC, Aued AW, Cândido D, Oliveira J, **Nunes LT**, Fontoura L, Sissini MN, Teschima MM, Silva MB, Ramlov F, Gouveia L, Ferreira CEL, Segal B, Horta PA, Floeter SR. (2015). Between-habitat variation of benthic cover, reef fish assemblage and feeding pressure at the only atoll in South Atlantic: Rocas Atoll, NE Brazil. PLoS ONE 10(6): e0127176. doi: 10.1371/journal.pone.0127176.

Anderson AB, Carvalho-Filho A, Morais RA, **Nunes LT**, Quimbayo JPA, Floeter SR. (2015). Brazilian tropical fishes in their southern limit of distribution: checklist of Santa Catarina's rocky reef ichthyofauna, remarks and new records. Check List 11(4):1688, doi: <http://dx.doi.org/10.15560/11.4.1688>.

Submitted

Liedke A, Barneche D, Ferreira CEL, Segal B, **Nunes LT**, Burigo AP, Carvalho J, Buck S, Bonaldo R, Floeter SR. Abundance, diet, foraging, and nutritional condition of the banded butterflyfish, *Chaetodon striatus*, along the Western Atlantic. *Submitted to Marine Biology in April 2015*.

In preparation

Liedke A, Segal B, Ferreira CEL, **Nunes LT**, Burigo AP, Buck S, Bonaldo RM, Floeter SR. Feeding ecology of the sympatric sister-species of butterflyfishes *Chaetodon capistratus* and *C. striatus* at La Parguera, Puerto Rico (To submit to Marine Ecology Progress Series)

Nunes LT, Morais RA, Longo GO, Floeter SR. Among-habitat variation in feeding and agonistic interactions of freshwater fishes at Serra da Bodoquena - Brazil (To submit to Neotropical Ichthyology).

Krajewski JP, **Nunes LT**, Guimarães Jr PR, Leite SG, Leite FPP, Floeter SR, Bonaldo RM. Fish feeding on benthic invertebrates on a tropical oceanic island: substratum use, diet and prey availability (To submit to Marine Ecology Progress Series).

Lastrucci NS, **Nunes LT**, Anchieta J, de Souza JN, Lindner A, Floeter SR. A phylogeographic and behavioral comparison of *Ophioblennius trinitatis* populations along the Brazilian coast.

5. OTHER RELEVANT INFORMATION

Languages:

- Portuguese (native language),
- English (basic reading, speaking and writing),
- Spanish (advanced reading and writing, basic speaking)

Diving qualifications: NAUI Open Water Diver, PADI Advanced OWD.

Scientific experience: Experience on working in freshwater environments (lakes, rivers and small streams) and marine systems (near-shore reefs) with limited structure facilities.

6. FIELDWORK EXPERIENCE

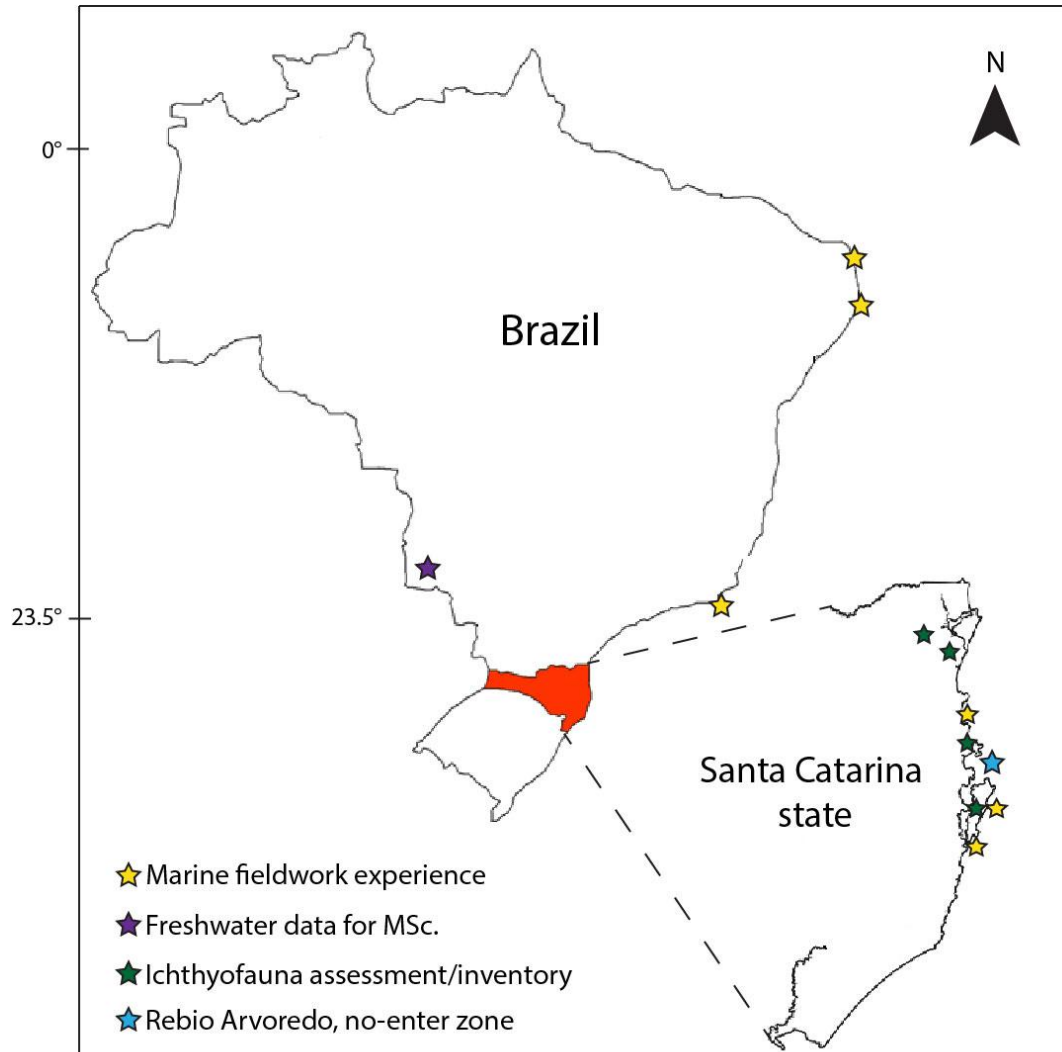


Fig. 3 - Fieldwork experience along the Brazilian coast. Red polygon represents the Santa Catarina state, in which I have been working with freshwater (green stars) and reef fish (yellow stars), including the marine (non-enter) conservation zone of Rebio Arvoredo (blue star). Purple star represents Olho d'água stream at Jardim city (Mato Grosso do Sul state) in which I have collected data for my master project. Remaining yellow stars represent: Natal (Rio Grande do Norte state), Tamandaré (Pernambuco state) and Arraial do Cabo (Rio de Janeiro state) cities.

Certified by the author on **17 Jul, 2015**