

# SHORT CURRICULUM VITAE



**Lucas Nunes Teixeira**  
Nunes, L.T.  
PhD student Ecology



nuneslteixeira@gmail.com



www.lattes.cnpq.br/5142248896164325



www.nuneslteixeira.weebly.com



Florianópolis, Santa Catarina - Brazil



+55 48 988138083 | +55 48 37215521

## 1. EDUCATION

- 2016 - present    PhD student in Ecology, UFSC, Brazil.  
2014 - 2016      Master in Ecology, UFSC, Brazil.  
2009 - 2013      Bachelor in Aquaculture Engineering, UFSC, Brazil.

## 2. PROFILE

As an undergraduate and master student, I studied the trophic ecology of fishes in freshwater and reef environments; conducted ichthyofaunal assessments of freshwater fishes in Brazil; assisted in restoring and organizing the ichthyology collection of the Universidade Federal de Santa Catarina; and worked on projects involving marine benthic community. As a PhD student, I am working with the trophic ecology of reef fishes by using diet and isotopic analyses. I also have been developing projects related to cleaning interactions, species checklist, phylogeography and fish behaviour. My main goal is to understand interactions among organisms, especially trophic interactions; distribution patterns; animal behaviour and ecomorphology of fishes.

## 3. PEER REVIEW PUBLICATIONS

- Nunes L**, Cord I, Siqueira AC, Liedke AMR, Ferreira CEL, Floeter SR. The influence of trophic and phylogenetic affinity in butterflyfish co-occurrence. *To be submitted to Proceedings of the Royal Society B (in prep)*
- Nunes L**, Cord I, Francini-Filho RB, Stampar SN, Pinheiro HT, Rocha LA, Floeter SR, Ferreira CEL. (2019). Ecology of *Prognathodes obliquus*, a butterflyfish endemic to mesophotic ecosystems of St. Peter and St. Paul's Archipelago. Coral Reefs. <https://doi.org/10.1007/s00338-019-01822-8>
- Nunes L**, Burle G, Gumboski EL, Dechoum M. (2018). Abiotic effects on the cover and richness of corticolous lichens on *Araucaria angustifolia* trunks. Acta Botanica Brasilica. <http://dx.doi.org/10.1590/0102-33062018abb0095>
- Lastrucci NS, **Nunes, LT**, Lindner A, Floeter SR. (2018). An updated phylogeny of the redlip blenny genus *Ophioblennius*. Journal of Fish Biology. 93(2):411-414. <http://dx.doi.org/10.1111/jfb.13732>
- Liedke AMR, Bonaldo RM, Segal B, Ferreira CEL, **Nunes LT**, Burigo AP, Buck S, Oliveira-Santos LGR, Floeter SR. (2018). Resource partitioning by two syntopic sister-species of butterflyfish (Chaetodontidae). Journal of the Marine Biological Association of United Kingdom. 98(7):1767-1773. <http://dx.doi.org/10.1017/S0025315417001321>

## SHORT CURRICULUM VITAE



- Quimbayo JP, **Nunes LT**, Ozekoski R, Floeter SR, Morais RA, Fontoura L, Bonaldo RM, Ferreira CEL, Sazima I. (2017). Cleaning interactions at the only atoll in the South Atlantic. *Environmental Biology of Fishes*. 100(7):865–875. <http://dx.doi.org/10.1007/s10641-017-0612-3>
- Liedke A, Barneche D, Ferreira CEL, Segal B, **Nunes LT**, Burigo AP, Carvalho J, Buck S, Bonaldo R, Floeter SR. (2016). Abundance, diet, foraging and nutritional condition of the banded butterflyfish (*Chaetodon striatus*) along the western Atlantic. *Marine Biology*. 163(6). <http://dx.doi.org/doi.org/10.1007/s00227-015-2788-4>
- Longo GO, Morais RA, Martins CDL, Mendes TC, Aued AW, Cândido D, Oliveira J, **Nunes LT**, Fontoura L, Sissini MN, Teschima MM, Silva MB, Ramlov F, Gouveia L, Ferreira CEL, Segal B, Horta PA, Floeter SR. (2015). Between-habitat variation of benthic cover, reef fish assemblage and feeding pressure at the only atoll in South Atlantic: Rocas Atoll, NE Brazil. *PLoS ONE*. 10(6):e0127176. <http://dx.doi.org/doi.org/10.1371/journal.pone.0127176>
- Anderson AB, Carvalho-Filho A, Morais RA, **Nunes LT**, Quimbayo JPA, Floeter SR. (2015). Brazilian tropical fishes in their southern limit of distribution: checklist of Santa Catarina's rocky reef ichthyofauna, remarks and new records. *Check List*. 11(4):1688. <http://dx.doi.org/10.15560/11.4.1688>

### 4. QUALIFICATION

#### Languages:

1. Portuguese (native language)
2. English (advanced reading, basic speaking and writing)
3. Spanish (advanced reading, basic speaking and writing)

#### Diving qualifications:

1. NAUI Open Water Diver (2012)
2. PADI Advanced OWD (2014)
3. PADI Rescue Diver (2015)

**Scientific experience:** Experience working in freshwater (lakes, rivers and small streams) and marine (costal and oceanic island) systems with limited structure facilities.

#### Management experience:

1. Manager on Macroecology and Biogeography Lab. (2016-present)
2. Scholarship manager in the Long-Term Monitoring Program of the Brazilian Oceanic Island (PELD-ILOC; 2016-present)

### 5. CO-ADVISOR IN MONOGRAPHS

1. Isadora Cord. A three-level approach in trophic ecology of *Chaetodon ocellatus*. 2018. Universidade Federal de Santa Catarina. Advisor: Sergio Floeter.
2. Alana Fraga. Diet and bite rates of *Ophioblennius* species in the Atlantic Ocean. 2018. Universidade Federal de Santa Catarina. Advisor: Sergio Floeter.
3. Alexander Artero Floyd. Feeding behaviour of *Abudefduf saxatilis* in Santa Catarina. 2018. Universidade Federal de Santa Catarina. Advisor: Sergio Floeter.
4. Angela Marina Canterle. Habitat influence on fish interactions in Principe island, África. 2017. Universidade Federal de Santa Catarina. Advisor: Sergio Floeter.
5. Samara Leopoldino Danielski. Feeding and agonistic interactions of *Melichthys niger* in oceanic islands. 2016. Universidade Federal de Santa Catarina. Advisor: Sergio Floeter.

## 6. MEDIA & PRESS RELEASE

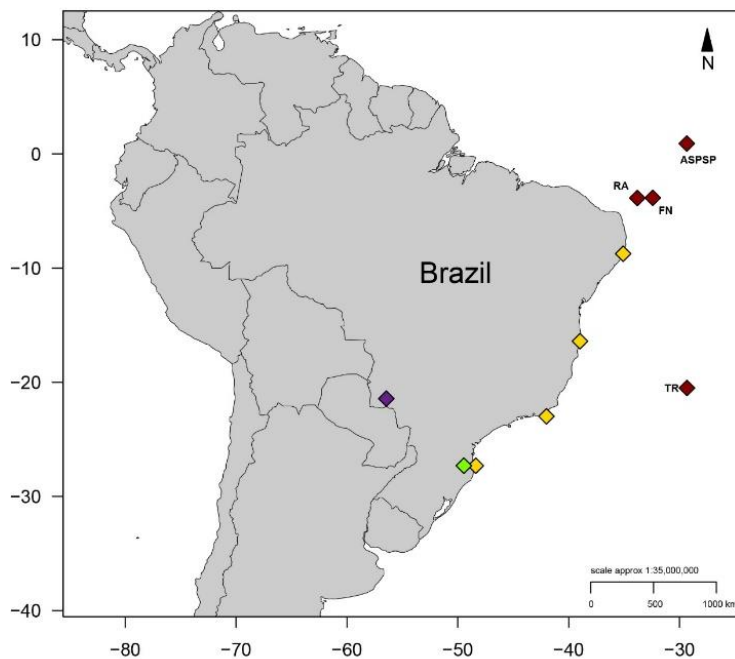
2017 – Cleaning interactions at Rocas Atoll <https://www.youtube.com/watch?v=eXcCHXVWdUw>

2017 – Cleaning interactions at Rocas Atoll [http://lbmm.ufsc.br/pdfs/Press\\_release\\_v3.jpg](http://lbmm.ufsc.br/pdfs/Press_release_v3.jpg)

2017 – Sea life of Trindade island <https://www.youtube.com/watch?v=FYNFSGRc6LA&t=96s>

2019 – *Prognathodes obliquus* <https://www.youtube.com/watch?v=y-bDIM6ogyM>

## 9. FIELDWORK EXPERIENCE



**Figure 2** - Fieldwork experience. Red diamonds represents the Brazilian's oceanic island of St. Peter and St. Paul archipelago (ASPSP), Fernando de Noronha (FN), Rocas atoll (RA) and Trindade Island (TR). Yellow diamonds represent coastal reefs of Tamandaré (Pernambuco state), Porto Seguro (Bahia), Arraial do Cabo (Rio de Janeiro state) and Florianópolis (Santa Catarina state). Green diamonds represent locations in Santa Catarina that I have made ichthyofaunal assessment. Purple diamond represent the location of the Olho d'água stream at Jardim city (Mato Grosso do Sul state) in which I have collected data for my master.